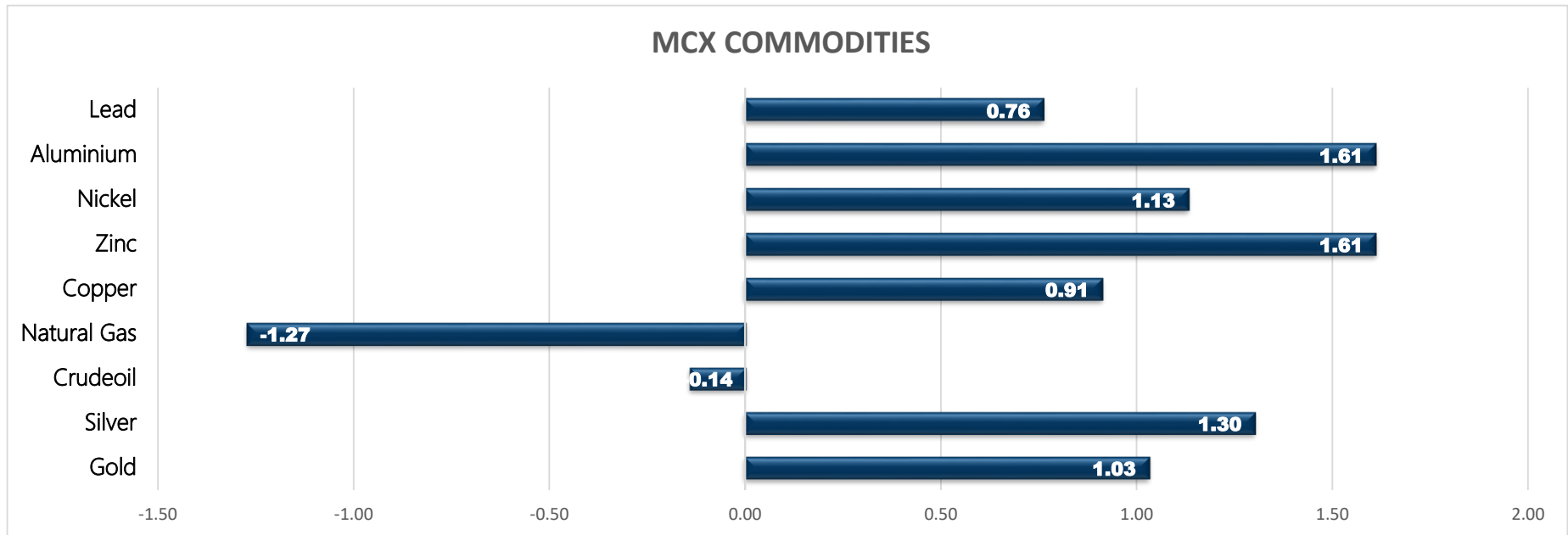


Commodity	Close	% Change
Gold	46838.00	1.03
Silver	67501.00	1.30
Crudeoil	4438.00	-0.14
Natural Gas	186.60	-1.27
Copper	695.60	0.91
Zinc	230.10	1.61
Nickel	1270.90	1.13
Aluminium	185.70	1.61
Lead	166.70	0.76

Commodity	Ltp*	% Change
Gold\$	1753.90	-0.08
Silver\$	25.40	-0.02
Crudeoil\$	59.60	-0.28
Natural Gas\$	2.52	0.08
Lme Copper	8971.00	-0.42
Lme Zinc	2842.00	-0.65
Lme Nickel	16770.00	-0.21
Lme Lead	1978.50	-0.35
Lme Aluminium	2274.50	-0.48

Economical Data	
EUR	German Industrial Production m/m
EUR	German Trade Balance
EUR	French Industrial Production m/m
EUR	Italian Retail Sales m/m
USD	Core PPI m/m
USD	PPI m/m
USD	Final Wholesale Inventories m/m

MCX COMMODITIES



MCX MARKET SYNOPSIS

Contract	Open	High	Low	Close	Rs Chg	% Chg	Volume	OI	% Chg
Copper Apr	691.00	696.90	691.00	695.60	6.25	0.91	10298	2863	4.30
Copper May	692.55	697.80	692.00	696.35	6.35	0.92	247	260	18.72
Zinc Apr	226.50	230.60	226.45	230.10	3.65	1.61	8773	2302	0.04
Zinc May	225.00	229.45	225.00	228.75	3.85	1.71	216	172	4.88
Nickel Apr	1264.50	1275.20	1259.70	1270.90	14.20	1.13	6182	1523	7.56
Nickel May	1264.20	1276.50	1263.50	1270.80	11.00	0.87	118	124	29.17
Aluminium Apr	183.20	185.85	182.70	185.70	2.95	1.61	2602	2024	0.75
Aluminium May	181.90	184.75	181.30	184.60	2.90	1.60	151	156	48.57
Lead Apr	165.40	167.10	165.00	166.70	1.25	0.76	1874	438	-6.21
Lead May	164.85	165.85	164.75	165.50	1.50	0.91	127	9	0.00

MCX PIVOT

Contract	Sup - 3	Sup - 2	Sup - 1	Pivot	Res - 1	Res - 2	Res - 3	OI Status
Copper Apr	686.20	688.60	692.10	694.50	698.00	700.40	703.90	Fresh Buying
Zinc Apr	223.40	224.90	227.60	229.10	231.80	233.30	236.00	Fresh Buying
Nickel Apr	1246.50	1253.10	1262.00	1268.60	1277.50	1284.10	1293.00	Fresh Buying
Aluminium Apr	180.70	181.70	183.80	184.80	186.90	187.90	190.00	Fresh Buying
Lead Apr	163.40	164.20	165.50	166.30	167.60	168.40	169.70	Short Covering

INTERNATIONAL MARKET SYNOPSIS

Commodity	Open	High	Low	Ltp*	Rs Chg	% Chg	LME STOCKS	
LME Copper	8941.50	9025.00	8908.50	9009.00	-38.00	-0.42	LME Copper	6750
LME Zinc	2832.50	2866.00	2823.00	2860.50	-18.50	-0.65	LME Zinc	0
LME Nickel	16640.00	16875.00	16465.00	16805.00	-35.00	-0.21	LME Nickel	-1194
LME Lead	1988.50	1996.50	1972.50	1985.50	-7.00	-0.35	LME Lead	-125
LME Aluminium	2257.00	2289.00	2255.00	2285.50	-11.00	-0.48	LME Aluminium	725

INTERNATIONAL PIVOT

Commodity	Sup - 3	Sup - 2	Sup - 1	Pivot	Res - 1	Res - 2	Res - 3
LME Copper	8820	8864	8937	8981	9053	9097	9170
LME Zinc	2791	2807	2834	2850	2877	2893	2920
LME Nickel	16145	16305	16555	16715	16965	17125	17375
LME Lead	1949	1961	1973	1985	1997	2009	2021
LME Aluminium	2230	2243	2264	2277	2298	2311	2332

COPPER

Copper trading range for the day is 688.6-700.4.

Copper prices gained after Chile tightened its lockdown over a spike in COVID-19 infections, with several new variants circulating.

However upside seen limited amid rising inventories and falling premiums pointed to slowing demand in top consumer China.

Germany factory orders rise for 2nd month

Warehouse stock for Copper at LME was at 157075mt that is up by 6750mt.



ZINC

Zinc trading range for the day is 224.9-233.3.

Zinc prices gained as support seen after recovery of domestic refined zinc supply missed expectations in March due to energy consumption control in Inner Mongolia.

China's refined zinc output stood at 496,900 mt in March, up 5.44% or 25,600 mt on the month and up 6.49% on the year.

Even as the US economy gathered steam this year, Federal Reserve officials remained cautious about the continuing risks of the pandemic

Warehouse stock for Zinc at LME was at 267650mt that is unchange mt.



NICKEL

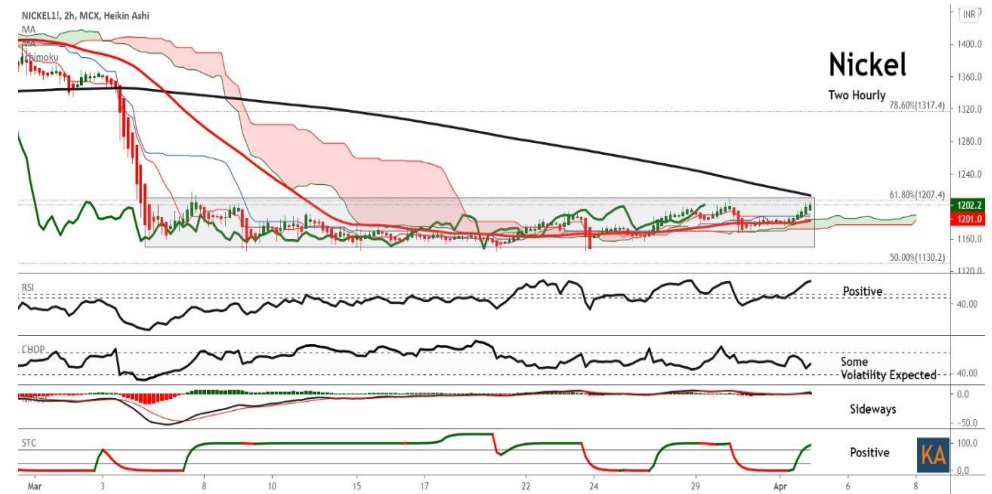
Nickel trading range for the day is 1253.1-1284.1.

Nickel prices gained amid falling US dollar and US Treasury yields, and IMF raised its 2021 growth outlook for the global economy to 6%.

IHS Markit's final euro zone composite PMI showed business activity in the bloc bouncing back in March

Fed's minutes showed the central bank committed to extending monetary policy support until an economic rebound in the United States was more secure.

Warehouse stock for Nickel at LME was at 257418mt that is down by -1194mt.



ALUMINIUM

Aluminium trading range for the day is 181.7-187.9.

Aluminium prices rose as traders worried that Chinese efforts to reduce smelter pollution will restrict output and supply will fall short of demand.

China accounts for around 60% of global aluminium output but the government is expected to curtail capacity growth

Soaring shipping costs, booming demand and tight supplies of primary and scrap aluminium are likely to fuel further price rises

Warehouse stock for Aluminium at LME was at 1860850mt that is up by 725mt.



SPREAD SYNOPSIS

Copper				
Month	Rate	Apr	May	Jun
Apr	695.60		0.75	1.45
May	696.35			0.70
Jun	697.05			

Zinc				
Month	Rate	Apr	May	Jun
Apr	230.10		-1.35	-2.70
May	228.75			-1.35
Jun	227.40			

Spread History			
Commodity	Max	Min	Avg
Copper	-19.90	5.36	64.00
Zinc	-7.25	0.37	2.40
Nickel	-7.25	0.37	2.40
Aluminium	-7.10	1.03	3.10
Lead	-22.20	3.71	13.20

Nickel				
Month	Rate	Apr	May	Jun
Apr	1270.90		-0.10	-0.20
May	1270.80			-0.10
Jun	1270.70			

Aluminium				
Month	Rate	Apr	May	Jun
Apr	185.70		-1.10	-2.20
May	184.60			-1.10
Jun	183.50			

COPPER PRICE MOVEMENT SINCE 2011													
Year	JAN	FEB	MAR	APR	MAY	JUN	JUL	AUG	SEP	OCT	NOV	DEC	Growth
2011	451.90	445.75	425.30	415.90	417.35	421.10	436.85	427.10	349.80	392.95	409.75	406.00	-33.50
	2.82	-1.36	-4.59	-2.21	0.35	0.90	3.74	-2.23	-18.10	12.34	4.28	-0.92	-7.62
2012	417.15	417.70	431.65	443.90	420.25	429.40	422.55	424.30	441.05	419.70	436.30	443.75	37.75
	2.75	0.13	3.34	2.84	-5.33	2.18	-1.60	0.41	3.95	-4.84	3.96	1.71	9.30
2013	440.05	418.20	410.20	381.00	413.05	406.60	421.55	486.95	466.40	452.50	444.40	468.55	24.80
	-0.83	-4.97	-1.91	-7.12	8.41	-1.56	3.68	15.51	-4.22	-2.98	-1.79	5.43	5.59
2014	444.95	443.20	404.15	403.00	410.80	422.35	436.10	417.95	416.00	414.70	390.75	399.10	-69.45
	-5.04	-0.39	-8.81	-0.28	1.94	2.81	3.26	-4.16	-0.47	-0.31	-5.78	2.14	-14.82
2015	342.85	371.80	378.45	404.60	386.65	368.75	335.40	341.75	342.70	336.55	301.15	315.50	-83.60
	-14.09	8.44	1.79	6.91	-4.44	-4.63	-9.04	1.89	0.28	-1.79	-10.52	4.77	-20.95
2016	311.60	322.00	321.25	334.20	312.50	327.15	329.70	305.60	328.55	326.05	396.05	372.90	57.40
	-1.24	3.34	-0.23	4.03	-6.49	4.69	0.78	-7.31	7.51	-0.76	21.47	-5.85	18.19
2017	406.10	397.85	380.75	367.60	368.75	385.20	410.65	434.55	427.95	444.70	431.40	466.00	93.10
	8.90	-2.03	-4.30	-3.45	0.31	4.46	6.61	5.82	-1.52	3.91	-2.99	8.02	24.97
2018	450.90	446.00	436.80	449.40	457.05	446.15	430.15	414.00	452.95	435.70	433.10	407.75	-58.25
	-3.24	-1.09	-2.06	2.88	1.70	-2.38	-3.59	-3.75	9.41	-3.81	-0.60	-5.85	-12.50
2019	437.60	464.70	451.05	450.30	404.50	411.05	444.15	443.95	438.05	437.95	432.60	441.25	33.50
	7.32	6.19	-2.94	-0.17	-10.17	1.62	8.05	-0.05	-1.33	-0.02	-1.22	2.00	8.22
2020	427.25	421.80	376.80	403.45	416.20	464.70	500.75	527.30	525.20	526.40	582.30	594.70	153.45
	-3.17	-1.28	-10.67	7.07	3.16	11.65	7.76	5.30	-0.40	0.23	10.62	2.13	34.78
2021	596.40	702.95	667.95										73.25
	0.29	17.87	-4.98										12.32
Average	-1.25	2.69	-2.53	0.32	-1.17	1.29	2.89	1.32	-0.10	0.35	2.05	2.44	Average

## ZINC PRICE MOVEMENT SINCE 2011

Year	JAN	FEB	MAR	APR	MAY	JUN	JUL	AUG	SEP	OCT	NOV	DEC	Growth
2011	107.25	111.90	103.50	101.20	101.30	103.50	109.95	104.85	93.20	93.75	101.35	98.45	-10.55
	-1.61	4.34	-7.51	-2.22	0.10	2.17	6.23	-4.64	-11.11	0.59	8.11	-2.86	-9.68
2012	105.60	104.00	102.85	107.10	107.15	103.95	103.20	100.60	110.45	99.30	110.55	111.45	13.00
	7.26	-1.52	-1.11	4.13	0.05	-2.99	-0.72	-2.52	9.79	-10.10	11.33	0.81	13.20
2013	113.95	111.05	102.90	110.50	106.30	109.70	109.55	128.25	117.80	118.25	116.00	129.05	17.60
	2.24	-2.54	-7.34	7.39	-3.80	3.20	-0.14	17.07	-8.15	0.38	-1.90	11.25	15.79
2014	122.80	130.95	119.05	123.95	122.40	132.45	144.55	142.90	141.10	143.40	138.00	137.20	8.15
	-4.84	6.64	-9.09	4.12	-1.25	8.21	9.14	-1.14	-1.26	1.63	-3.77	-0.58	6.32
2015	130.40	127.70	129.90	149.75	141.05	127.10	122.85	121.30	108.90	109.10	103.20	106.15	-31.05
	-4.96	-2.07	1.72	15.28	-5.81	-9.89	-3.34	-1.26	-10.22	0.18	-5.41	2.86	-22.63
2016	109.25	122.45	118.40	129.20	129.30	142.15	148.80	155.90	158.10	163.90	185.55	173.80	67.65
	2.92	12.08	-3.31	9.12	0.08	9.94	4.68	4.77	1.41	3.67	13.21	-6.33	63.73
2017	193.10	187.70	180.40	169.45	165.95	178.25	179.50	200.95	210.20	215.05	205.95	207.60	33.80
	11.10	-2.80	-3.89	-6.07	-2.07	7.41	0.70	11.95	4.60	2.31	-4.23	0.80	19.45
2018	228.60	227.75	214.10	211.75	209.05	202.15	180.40	176.10	186.65	192.60	180.20	171.95	-35.65
	10.12	-0.37	-5.99	-1.10	-1.28	-3.30	-10.76	-2.38	5.99	3.19	-6.44	-4.58	-17.17
2019	195.15	197.80	221.35	223.20	203.00	200.50	192.25	185.30	185.55	187.85	185.05	179.00	7.05
	13.49	1.36	11.91	0.84	-9.05	-1.23	-4.11	-3.62	0.13	1.24	-1.49	-3.27	4.10
2020	174.45	154.85	145.50	150.60	159.00	163.50	184.00	196.05	190.80	201.80	220.20	214.40	35.40
	-2.54	-11.24	-6.04	3.51	5.58	2.83	12.54	6.55	-2.68	5.77	9.12	-2.63	11.81
2021	205.90	219.55	220.00										5.60
	-3.96	6.63	0.20										11.81
Average	0.89	1.16	-2.09	2.65	-2.59	0.61	2.69	2.59	-0.91	1.82	0.66	0.77	Average

## NICKEL PRICE MOVEMENT SINCE 2011

Year	JAN	FEB	MAR	APR	MAY	JUN	JUL	AUG	SEP	OCT	NOV	DEC	Growth
2011	1243.90	1294.00	1165.40	1202.40	1045.80	1037.70	1098.80	1022.90	898.80	940.90	869.60	992.20	-119.60
	11.88	4.03	-9.94	3.17	-13.02	-0.77	5.89	-6.91	-12.13	4.68	-7.58	14.10	-10.76
2012	1050.20	974.30	927.40	936.60	923.80	935.40	892.80	884.40	978.50	878.50	931.70	935.70	-56.50
	5.85	-7.23	-4.81	0.99	-1.37	1.26	-4.55	-0.94	10.64	-10.22	6.06	0.43	-5.69
2013	979.10	895.70	921.50	824.00	826.70	823.90	829.20	928.20	869.80	892.20	836.90	864.50	-71.20
	4.64	-8.52	2.88	-10.58	0.33	-0.34	0.64	11.94	-6.29	2.58	-6.20	3.30	-7.61
2014	855.80	902.80	945.50	1097.40	1139.60	1124.30	1130.40	1140.30	1016.80	971.00	996.80	945.70	81.20
	-1.01	5.49	4.73	16.07	3.85	-1.34	0.54	0.88	-10.83	-4.50	2.66	-5.13	9.49
2015	922.90	874.90	779.70	881.00	808.00	744.50	698.50	668.10	661.90	660.90	583.50	582.00	-363.70
	-2.41	-5.20	-10.88	12.99	-8.29	-7.86	-6.18	-4.35	-0.93	-0.15	-11.71	-0.26	-38.46
2016	579.80	577.60	549.10	629.10	568.50	636.40	700.00	651.20	703.30	696.30	751.20	706.00	169.20
	-0.38	-0.38	-4.93	14.57	-9.63	11.94	9.99	-6.97	8.00	-1.00	7.88	-6.02	29.07
2017	670.30	725.30	640.10	608.90	568.50	600.60	655.70	743.70	692.60	766.30	727.50	783.40	77.40
	-5.06	8.21	-11.75	-4.87	-6.63	5.65	9.17	13.42	-6.87	10.64	-5.06	7.68	10.96
2018	863.10	898.30	840.50	926.40	1024.40	1022.30	944.00	909.30	905.00	860.00	774.80	741.60	-41.80
	10.17	4.08	-6.43	10.22	10.58	-0.20	-7.66	-3.68	-0.47	-4.97	-9.91	-4.28	-5.34
2019	884.90	931.10	904.00	854.60	876.50	906.00	1013.50	1245.40	1216.80	1200.40	1005.50	1029.20	287.60
	19.32	5.22	-2.91	-5.46	2.56	3.37	11.87	22.88	-2.30	-1.35	-16.24	2.36	38.78
2020	943.80	901.00	860.10	922.60	940.40	975.00	1041.90	1135.70	1065.30	1142.70	1206.70	1212.20	183.00
	-8.30	-4.53	-4.54	7.27	1.93	3.68	6.86	9.00	-6.20	7.27	5.60	0.46	17.78
2021	1286.90	1367.70	1184.10										-28.10
	6.16	6.28	-13.42										-2.32
Average	3.37	1.29	-2.98	4.20	-3.04	0.58	3.21	3.12	-1.76	0.18	-3.13	1.80	Average



## ALUMINIUM PRICE MOVEMENT SINCE 2011

Year	JAN	FEB	MAR	APR	MAY	JUN	JUL	AUG	SEP	OCT	NOV	DEC	Growth
2011	114.05	114.35	116.05	122.55	119.25	112.20	115.55	112.60	107.95	106.85	103.10	106.95	-3.20
	3.54	0.26	1.49	5.60	-2.69	-5.91	2.99	-2.55	-4.13	-1.02	-3.51	3.73	-2.91
2012	112.15	112.65	108.35	108.05	111.35	105.65	103.95	103.00	110.95	101.85	113.35	111.75	4.80
	4.86	0.45	-3.82	-0.28	3.05	-5.12	-1.61	-0.91	7.72	-8.20	11.29	-1.41	4.49
2013	110.50	105.40	103.65	100.10	105.95	105.05	105.85	122.10	113.15	112.55	106.75	109.20	-2.55
	-1.12	-4.62	-1.66	-3.42	5.84	-0.85	0.76	15.35	-7.33	-0.53	-5.15	2.30	-2.28
2014	103.90	107.00	104.00	106.75	107.65	111.20	121.45	126.70	119.20	126.85	128.35	116.00	6.80
	-4.85	2.98	-2.80	2.64	0.84	3.30	9.22	4.32	-5.92	6.42	1.18	-9.62	6.23
2015	113.45	112.40	111.95	121.40	108.75	104.95	102.00	107.15	102.60	94.40	96.35	100.15	-15.85
	-2.20	-0.93	-0.40	8.44	-10.42	-3.49	-2.81	5.05	-4.25	-7.99	2.07	3.94	-13.66
2016	103.80	111.25	98.90	111.25	104.00	110.55	108.30	107.20	110.55	115.95	118.00	117.20	17.05
	3.64	7.18	-11.10	12.49	-6.52	6.30	-2.04	-1.02	3.12	4.88	1.77	-0.68	17.02
2017	123.40	126.45	126.20	123.90	123.90	123.55	121.95	135.30	137.90	138.60	131.00	143.30	26.10
	5.29	2.47	-0.20	-1.82	0.00	-0.28	-1.30	10.95	1.92	0.51	-5.48	9.39	22.27
2018	141.65	140.50	130.65	148.50	154.15	149.70	141.40	150.10	145.90	143.95	137.20	128.15	-15.15
	-1.15	-0.81	-7.01	13.66	3.80	-2.89	-5.54	6.15	-2.80	-1.34	-4.69	-6.60	-10.57
2019	136.00	151.10	149.15	146.20	145.35	143.20	140.35	138.70	134.60	132.00	133.55	137.25	9.10
	6.13	11.10	-1.29	-1.98	-0.58	-1.48	-1.99	-1.18	-2.96	-1.93	1.17	2.77	7.10
2020	139.10	136.70	134.45	131.00	131.70	137.95	140.90	146.15	143.80	152.95	167.05	160.95	23.70
	1.35	-1.73	-1.65	-2.57	0.53	4.75	2.14	3.73	-1.61	6.36	9.22	-3.65	17.27
2021	162.25	173.50	176.65										15.70
	0.81	6.93	1.82										9.75
Average	0.81	2.06	-1.72	2.42	-0.79	-0.99	1.00	3.31	-0.75	-0.12	0.53	0.61	Average



The logo for KEDIA ADVISORY is displayed within a dark blue rectangular box. The word "KEDIA" is written in a bold, yellow, sans-serif font, and the word "ADVISORY" is written in a white, sans-serif font to its right.

KEDIA STOCKS & COMMODITIES RESEARCH PVT LTD.  
Mumbai. INDIA.

For more details, please contact:  
Mobile: +91 9323406035 / 9320096333 / 9619551022  
Email: [info@kediaadvisory.com](mailto:info@kediaadvisory.com)  
URL: [www.kediaadvisory.com](http://www.kediaadvisory.com)  
SEBI REGISTRATION NUMBER - INH000006156

General Disclaimers: This Report is prepared and distributed by Kedia Stocks & Commodities Research Pvt Ltd. for information purposes only. The recommendations, if any, made herein are expression of views and/or opinions and should not be deemed or construed to be neither advice for the purpose of purchase or sale through KSCRPL nor any solicitation or offering of any investment /trading opportunity. These information / opinions / views are not meant to serve as a professional investment guide for the readers. No action is solicited based upon the information provided herein. Recipients of this Report should rely on information/data arising out of their own investigations. Readers are advised to seek independent professional advice and arrive at an informed trading/investment decision before executing any trades or making any investments. This Report has been prepared on the basis of publicly available information, internally developed data and other sources believed by KSCRPL to be reliable. KSCRPL or its directors, employees, affiliates or representatives do not assume any responsibility for, or warrant the accuracy, completeness, adequacy and reliability of such information / opinions / views. While due care has been taken to ensure that the disclosures and opinions given are fair and reasonable, none of the directors, employees, affiliates or representatives of KSCRPL shall be liable for any direct, indirect, special, incidental, consequential, punitive or exemplary damages, including lost profits arising in any way whatsoever from the information / opinions / views contained in this Report. The possession, circulation and/or distribution of this Report may be restricted or regulated in certain jurisdictions by appropriate laws. No action has been or will be taken by KSCRPL in any jurisdiction (other than India), where any action for such purpose(s) is required. Accordingly, this Report shall not be possessed, circulated and/ or distributed in any such country or jurisdiction unless such action is in compliance with all applicable laws and regulations of such country or jurisdiction. KSCRPL requires such recipient to inform himself about and to observe any restrictions at his own expense, without any liability to KSCRPL. Any dispute arising out of this Report shall be subject to the exclusive jurisdiction of the Courts in India.